

# Westside WEEKLY

ISSUE 23 2 NOV - 8 NOV 2018

## Welcome

'Westside Weekly' is a newsletter designed to keep those working and living in the area up-to-date on the progress of the Birmingham Westside Metro extension.



## Getting Around

We appreciate that everyone will have a different journey; the following is to assist you to plan ahead:

Paradise Circus is closed in both directions until summer 2019 to facilitate the Metro construction from Victoria Square to Centenary Square. The A38 underpass remains open in both directions. Centenary Square is also closed to vehicles, while buses are diverting via Sheepcote Street and Bath Row. Traffic on Brunel Street will flow in the opposite direction for the duration of the closure.

Ongoing works to futureproof the utility infrastructure will be taking place outside of the Reflex nightclub.

Excavation works will be taking place outside the Brasshouse pub from Monday 5 November for approximately four weeks, to replace the existing gas pipe.

One lane is closed from the Sheepcote Street junction of Broad Street, towards the city centre, to allow gas works to take place. These works are scheduled to finish on Friday 30 November.

From Monday 5 November until Friday 9 November there will be no left turn into Bishopsgate Street from Broad Street to allow for utility works.

We recommend that you plan ahead, consider using public transport, walking or cycling if possible. If you do have to travel by car, allow more time for your journey and consider travelling off-peak if possible. For travel advice, visit: [www.networkwestmidlands.com/keepmoving](http://www.networkwestmidlands.com/keepmoving)

## Metro extension work this week

### Stephenson Street

Drainage works on the eight metre deep storm drain have continued to move forward as we prepare to connect new track with the existing line.

### Pinfold Street

This week, more progress has been made with the pouring of concrete for the floating track slab, to minimise the vibration impact when the Metro is in operation.

### Paradise Street

Drainage works have continued this week together with the fixing of reinforcement in preparation for the pouring of concrete.

### Victoria Square

Works to reinstate the asphalt (as pictured right) in time for the Frankfurt Christmas Market are almost complete, with hoarding surrounding the construction site set to be removed on Saturday 3 November.

### Broad Street

Excavation works to allow for future proofing of the utilities infrastructure has been ongoing.

## Shaping the workforce of tomorrow

The Midland Metro Alliance is helping to lead the way in the light rail industry by giving those not in employment, education and training an opportunity to start a level 2 multi-skill apprenticeship.

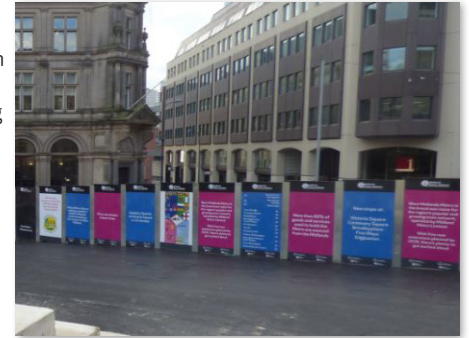
The alliance is preparing its final submission for a new apprenticeship scheme which will help those without formal qualification gain their first steps in the industry. The scheme will also provide candidates with transferable skills and career opportunities across the sector.



## Traffic marshal goes above and beyond

A Traffic marshal working on the Birmingham Westside extension went above and beyond his duties to help a member of the public.

Ron Simpson was directing traffic in Paradise Street when he witnessed a woman fall. The woman, who suffers from a neurological condition, was in difficulty but with the help of Ron managed to make it to her car safely.



## Date set for Stephenson Street works

Works to connect the existing Metro line in Stephenson Street with the track of the new extension on Pinfold Street will get underway on Sunday 4 November. This will involve changes to traffic management in the area, which include:

- The lower section of Pinfold Street will be open to vehicles accessing Victoria Square House car park only and will become two-way to facilitate this;
- Access for the Stephenson Street loading bay and the Colonnade car park will be maintained under marshal control;
- West Midlands Metro services will continue to arrive and depart from Grand Central Metro stop at platform one.

Pedestrian access will be maintained at all times during these works.




For FAQs and further information visit: <http://metroalliance.co.uk/projects/birminghamwestside-extension/>



**How can I get further information?**

For further information or to view past issues of the newsletter please visit: [www.metroalliance.co.uk](http://www.metroalliance.co.uk)

or email: [communications@metroalliance.co.uk](mailto:communications@metroalliance.co.uk)

Alternatively, you can follow:  
 [company/midland-metro-alliance](https://www.linkedin.com/company/midland-metro-alliance)  
 [@midlandtram](https://twitter.com/midlandtram)  
 [Midland Metro Alliance](https://www.facebook.com/MidlandMetroAlliance)