

# Westside WEEKLY

ISSUE 33 01 - 07 FEB 2019

## Welcome

'Westside Weekly' is a newsletter designed to keep those working and living in the area up-to-date on the progress of the Birmingham Westside Metro extension.



## Getting Around



We appreciate that everyone will have a different journey; the following is to assist you to plan ahead:

Paradise Circus is closed in both directions to facilitate the Metro construction from Victoria Square to Centenary Square. The A38 underpass remains open in both directions. Centenary Square is also closed to vehicles, while buses are diverting via Sheepcote Street and Bath Row. Traffic on Brunel Street will flow in the opposite direction for the duration of the closure.

The lower section of Pinfold Street is only open to vehicles accessing Victoria Square House car park. This is to connect the existing Metro line with the track of the new extension on Pinfold Street.

Ongoing works to futureproof the utility infrastructure are taking place outside of the Reflex nightclub.

The Broad Street Canal Tunnel is closed to canal and towpath traffic until spring 2019 for strengthening works. Clearly signed diversion routes are in place.

The pedestrian crossing outside Regency Wharf will be closed on Saturday 9 February and Sunday 10 February for utility diversion works.

One lane will be closed inbound and one lane outbound of Hagley Road to enable utility works for the Sprint bus. These lane closures will take place over eight weekends from Friday 15 February.

We recommend that you plan ahead, consider using public transport, walking or cycling if possible. If you do have to travel by car, allow more time for your journey and consider travelling off-peak if possible. For travel advice, visit: [www.networkwestmidlands.com/keepmoving](http://www.networkwestmidlands.com/keepmoving)

## Metro extension work this week

### Stephenson Street

The first stage of concrete has been poured at the tie-in of the existing track in preparation for track installation.

### Pinfold Street

Concrete pouring for the creation of track slab has been carried out this week.

### Victoria Square

Ducting has been installed for the passenger information systems, while kerbing works for the platform have been completed.

### Paradise Street

Waterproofing work to the Queensway Tunnel has continued with a slow start due to poor weather conditions. Primer has been applied together with the first coating of the waterproofing membrane.

### Broad Street

The excavation, laying and backfilling of a new gas pipe diversion has moved forward as planned, while footpath paving works have continued to progress.

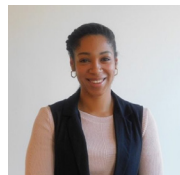


## Canal works on schedule

Concrete cutting works to remove the chamfered edge of the bridge structure have been completed two days ahead of the projected finish date, allowing the overall progress of the project to remain on schedule.

This week, a specialist spill kit has also been used to help contain any hazardous material from the large generator powering the concrete cutting tools and wall chasers being used under the bridge.

The spill kit is larger than most and was made to contain trailer-mounted generators.



## Meet new Stakeholder Liaison Officer for Edgbaston phase

A new dedicated Stakeholder Liaison Officer is available to answer all of your questions about the second phase of the project.

Shervorne Brown is on hand to deal with any queries relating to the extension from Centenary Square to Edgbaston.

Having previously worked on the Wolverhampton City Centre Metro extension, Shervorne is looking forward to getting to know all stakeholders and ensuring that their needs and expectations are met where possible.

Amy Walker will continue as Stakeholder Liaison Officer for the first phase of the route from Grand Central to Centenary Square.

You can get in contact with Shervorne and Amy by emailing [communications@metroalliance.co.uk](mailto:communications@metroalliance.co.uk)

## Tram driving skills put to the test at transport event

Visitors at a transport event got to test their tram driving skills on a simulator travelling from Grand Central to Centenary Square.

The Midland Metro Alliance took the simulator along to the Solihull Chamber of Commerce's Transport Update event to showcase how the new line will look when operational. They also provided visitors with an update on the extension projects.






How can I get further information?

For further information or to view past issues of the newsletter please visit: [www.metroalliance.co.uk](http://www.metroalliance.co.uk)

or email: [communications@metroalliance.co.uk](mailto:communications@metroalliance.co.uk)

Alternatively, you can follow:

 [company/midland-metro-alliance](https://www.linkedin.com/company/midland-metro-alliance)  
 [@midlandtram](https://twitter.com/midlandtram)  
 Midland Metro Alliance